



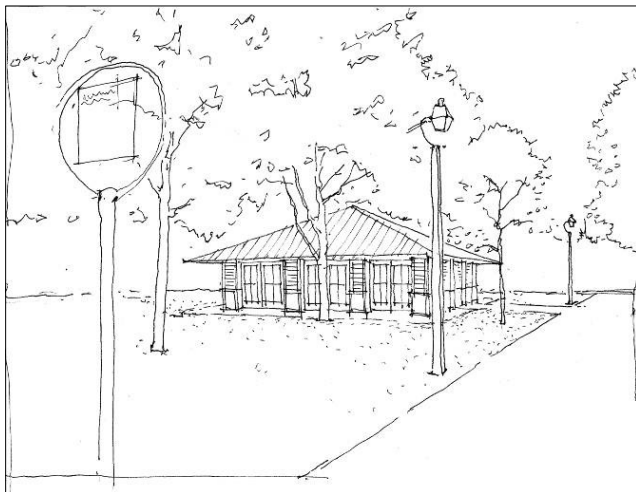
**PRESS CONTACT:**  
 Cari Feiler Bender, Relief Communications, LLC  
 (610) 416-1216, cari@reliefcomm.com

## FRANKLIN SQUARE BREAKS GROUND ON ALL-SEASON PAVILION

**PHILADELPHIA, November 16, 2011** – Today, **Historic Philadelphia, Inc.** broke ground on an all-season event space in Franklin Square, to be completed in the next few months. In celebration of Franklin Square’s 5<sup>th</sup> Birthday season this year, the party location in the Northwest corner of the Square is undergoing a major transformation with the construction of a permanent structure thanks to a grant from the William Penn Foundation. Parties and special events will now take place in this flexible space, allowing for a variety of year-round events.



“In the five years since Historic Philadelphia, Inc. renovated Franklin Square, we have discovered many fans who want to celebrate occasions there,” said **Amy Needle, President and CEO of Historic Philadelphia, Inc.** “We get requests year-round for birthday parties, special events, and get-togethers, and now Franklin Square can host terrific events in any weather or season.”



**The new permanent structure** will be 36 feet by 36 feet, and will be constructed in the Northwest corner of the Square in the space previously occupied by a 30 feet by 30 feet tent used for parties. The exterior will compliment SquareBurger, which was built in 2009, to be consistent in design and coloring. The new building will be heated in the winter, air-conditioned in the summer,

– more –



and have doors that can create an open-air space as weather permits. With a variety of seating options from banquet to theater-style seating for parties and performances, the new space will be a fun new option for parties, corporate events, and meetings year-round. Depending on the arrangements, capacity can be up to 100 people. The William Penn Foundation grant of \$400,000 will cover the construction costs.

The new space can be rented for public special events and also as venue for Once Upon A Nation ticketed performances or group presentations throughout the year. Once Upon A Nation is the attraction under the Historic Philadelphia, Inc. umbrella which produces storytelling benches, programs with History Makers, and Adventure Tours in Philadelphia's historic district and at Valley Forge National Historical Park. **Catering options available will include the award-winning SquareBurger/Stephen Starr Events.**

The overall landscape of the Square will not be altered by the construction. Picnic tables previously located under the party tent will be relocated within other parts of Franklin Square. The construction has been approved by the Philadelphia Parks and Recreation, Philadelphia Department of Licenses and Inspections, and the Philadelphia Art Commission.

To be among the first to book a party, meeting, performance, or special event at the new structure in Franklin Square, send inquiries to Jessica Whiteman at 215-629-5801x221 or [jessica@historicphiladelphia.org](mailto:jessica@historicphiladelphia.org).

Historic Philadelphia, Inc., the non-profit organization that manages and operates Franklin Square, has retained **Dan Bosin & Associates** (DBA) as the Project Manager. DBA oversaw both the Franklin Square Revitalization Project in 2005 as well as SquareBurger in 2009. DBA has also worked on the new gallery and conference center at the Chemical Heritage Foundation, the Dorrance Hamilton building at Thomas Jefferson University, and is currently working on renovations to the underground museum at Franklin Court.

**McDonald Building Company, LLC** (MBC) of Plymouth Meeting, PA has been hired as the General Contractor. MBC focuses on complex projects and mixed-use developments in residential, commercial, retail, higher education, industrial, and health care markets. The company holds experience in all aspects of construction management and sustainable projects including LEED-certified buildings. Recently completed projects include a demolition and renovation of new law offices in Cherry Hill, NJ, and a gut rehabilitation of 40 residential units in Philadelphia which were awarded LEED Platinum certification.

### **WINTER SPECIAL EVENTS IN FRANKLIN SQUARE**

The holiday season is always special in Franklin Square, with festive family fun. **Santa Claus** will return to Franklin Square in the holiday season. On November 25, 26, & 27, from 2 - 5 pm, **Visit with Santa Claus** and bring your Christmas list FREE! On November 29 at 5 pm, the **Franklin Square Holiday Celebration** with Santa Claus and Benjamin Franklin will officially kick off the holiday season. Attractions open 5 – 7 pm on

November 29. In December, **Visit with Santa Claus** returns on Saturdays and Sundays from 2 – 5 pm, where children can bring their Christmas list and visit with Santa, FREE! (December 3 – 18 and 24, Saturdays and Sundays, 2 - 5 pm.) Franklin Square also hosts a very special **Kids' New Year's Eve Countdown** on December 31 at 6 pm with a kids' version of the famous New Year's Eve celebration, with a dropping "square" in lieu of the famous ball, FREE! Penn's Landing Fireworks visible from Franklin Square.

### **SQUAREBURGER WINTER MENU**

**The Best-of-Philly SquareBurger**, a partnership between Historic Philadelphia, Inc. and Starr Restaurants, presents a delicious menu featuring burgers, hot dogs, french fries, salad, southern-fried chicken fingers, and delectable frozen treats such as The Cake Shake with Tastykake Butterscotch Krimpet© throughout the year. **For the winter season, hot chocolate will be added to the menu. The holiday Shake-of-the-Month is Candy Cane Shake.**

**Franklin Square is located in Historic Philadelphia** at 6th & Race Streets. Winter hours are as follows:

November 25 – 27: 12 - 5 pm  
November 29: 5 - 7 pm (open for holiday celebration)  
December 3 – 18: 12 - 5 pm, Saturdays & Sundays  
December 24: 12 - 5 pm  
December 26 – 30: 12 - 5 pm, daily  
December 31: 12 - 6 pm  
January 1 - 2: 12 - 5 pm, daily

SquareBurger operates at the same hours as other attractions on these dates.

Hours vary by season. Franklin Square will reopen for the 2012 season in late March. Check

[www.historicphiladelphia.org](http://www.historicphiladelphia.org) for complete operating hours by season. All hours are weather permitting.

Fun family entertainment and a beautiful park are just steps away from the Liberty Bell, in one of William Penn's original five squares. Franklin Square, renovated, operated, and managed by Historic Philadelphia, Inc., is an outdoor amusement oasis featuring Philly Mini Golf, a restored vintage marble fountain, playgrounds, the Philadelphia Park Liberty Carousel, and the acclaimed **SquareBurger**, with offerings from Starr Restaurants. After a day of experiencing the treasures of Philadelphia's history, putt through some of the city's most famous icons, take a ride on hometown racehorse heroes Afleet Alex or Smarty Jones aboard the carousel, enjoy a rest next to the refreshing fountain, and dine on the finest burgers and shakes in town. Awarded Best of Philly® two times by *Philadelphia Magazine* and one of the top ten playgrounds in the United States by *Dream On Travel*.

**Historic Philadelphia, Inc.** makes our nation's history relevant and real through interpretation, interaction, and education, strengthening Greater Philadelphia's role as the destination to experience American history. Historic Philadelphia, Inc.'s programs include the Betsy Ross House, Once Upon A Nation storytelling and Adventure Tours, Franklin Square, and Lights of Liberty. For more information, call (215) 629-4026, visit [www.historicphiladelphia.org](http://www.historicphiladelphia.org), or buy tickets in person at the Historic Philadelphia Center, 6<sup>th</sup> & Chestnut Streets. Follow Franklin Square at <http://twitter.com/FranklinSqr> or on Facebook at <http://on.fb.me/FranklnSquareFB>.

###

**EDITOR'S NOTE: High-resolution photographs are available for media usage at: <http://tinyurl.com/HPIphoto>. Email [cari@reliefcomm.com](mailto:cari@reliefcomm.com) for login information.**